

# advantage



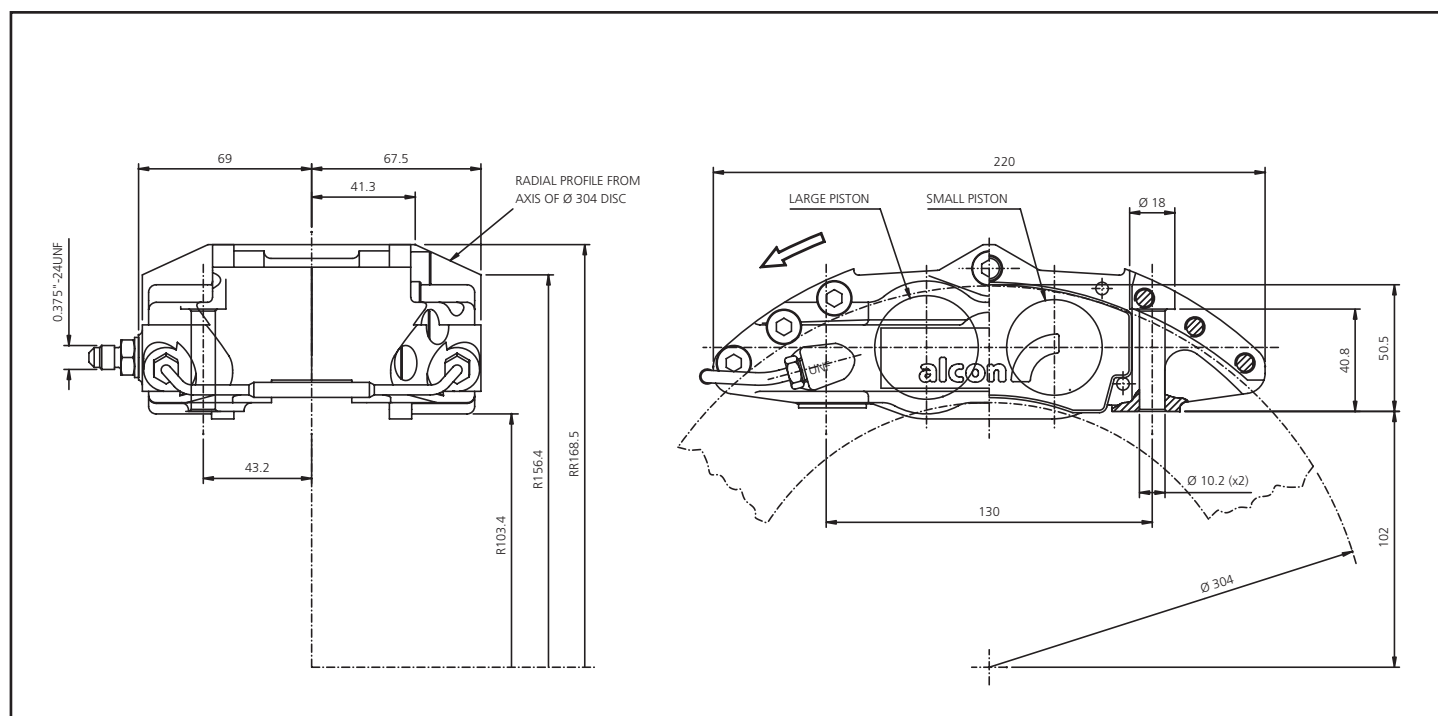
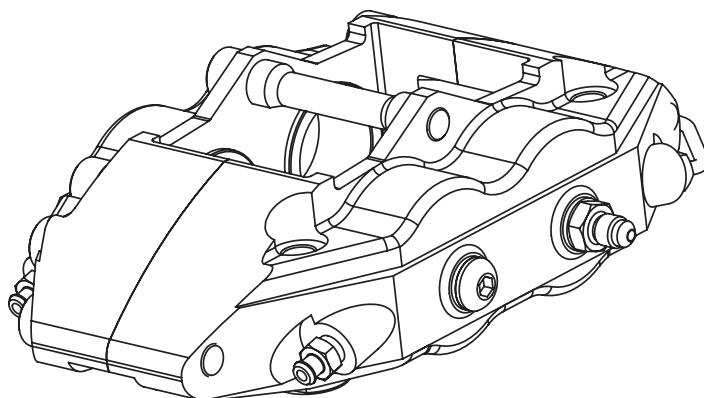
## 4 piston radial mount H-type caliper

### PRODUCT REF

CRH304/28-32/32LL	CRH304/28-38/41LL
CRH304/28-32/32RL	CRH304/28-38/41RL
CRH304/28-32/32LT	CRH304/28-38/41LT
CRH304/28-32/32RT	CRH304/28-38/41RT

### KEY FEATURES AND BENEFITS

- **Radial mounting for maximum rigidity**  
Firm, consistent pedal
- **Made from aerospace grade aluminium alloy**  
High strength to weight ratio
- **Differential piston diameters**  
Minimises pad taper wear
- **Uses popular H-type pad shape**  
Wide range of friction materials available
- **Pad retaining sleeve**  
High rigidity with straightforward pad changes



SPECIFICATION	32/32	38/41
piston diameter	31.8 / 31.8	38.1 / 41.3
disc diameter	250-304	250-304
disc thickness	22-25.4	22-25.4
caliper weight	1.91kg	1.91kg
pad area	84cm <sup>2</sup> / 89cm <sup>2</sup>	84cm <sup>2</sup> / 89cm <sup>2</sup>
pad thickness	16	16
seal kit reference	CSK3232E751	CSK3841E751

PAD SHAPES	
Alcon	4463
Carbone Lorraine	5007W43 / 5003W48
Ferodo	FRP219 / FRP201
Hawk	HB107
Mintex	MDB1200 / MDB1864
Pagid	U1265
SBS	3001