

hydraulic clutch release units

PRODUCTS

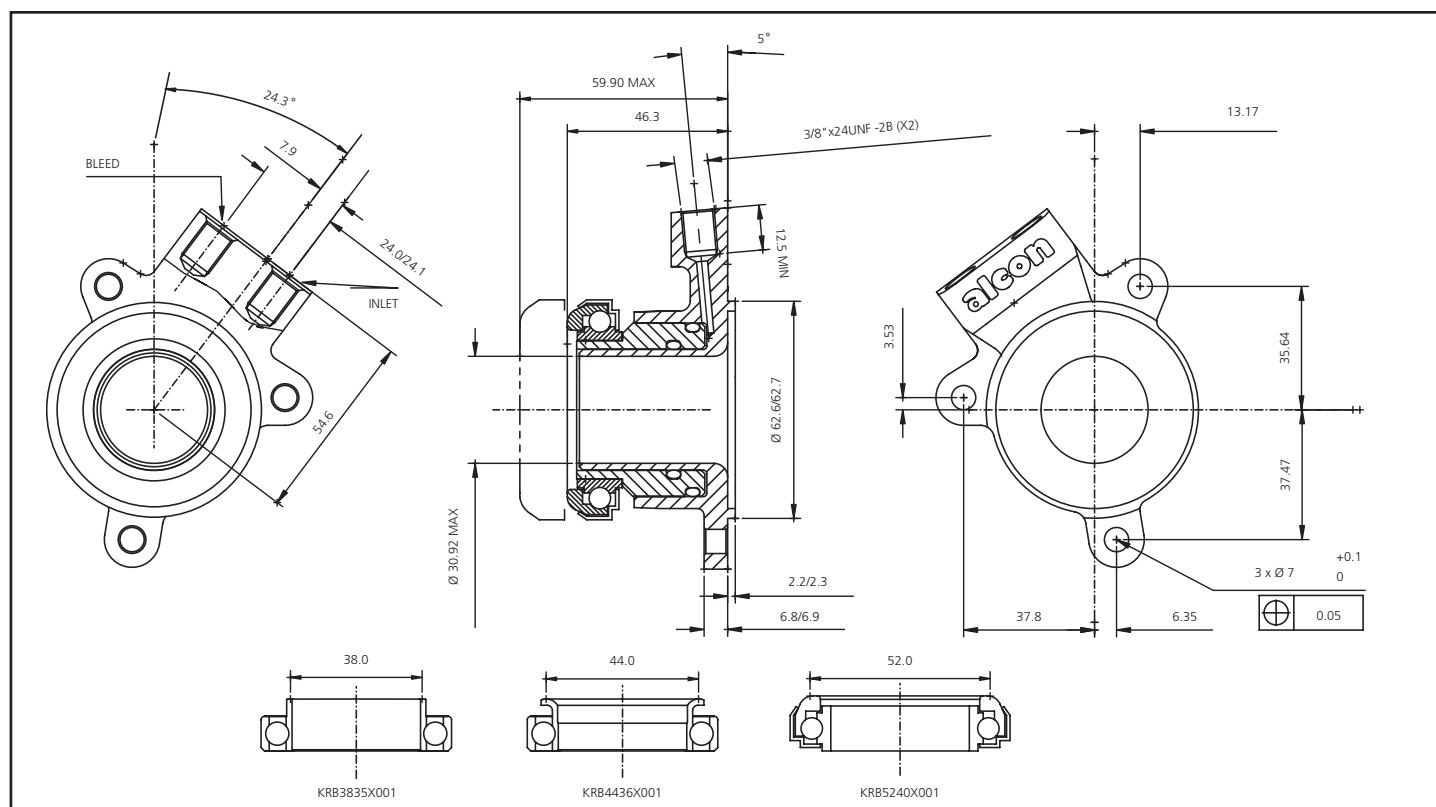
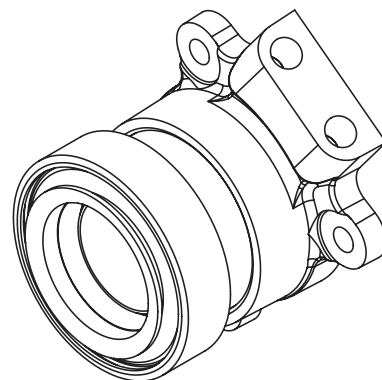
KSA3813FX001

KSA4413FX001

KSA5213FX001

KEY FEATURES AND BENEFITS

- **Compact design**
Low weight
- **Self centering high speed replaceable bearing included**
- **Durable hard anodised finish**
- **Replaces existing Saab type units**



SPECIFICATION	
effective piston area	10cm ²
weight (excl. bearing)	0.21kg
maximum operating pressure	35 bars
maximum piston stroke	13.6mm
seal kit reference	SSK5035E601

PRODUCT REF	BEARING	REPLACEMENT
	Ø	BEARING REF
KSA3813FX001	38	KRB3835X001
KSA4413FX001	44	KRB4436X001
KSA5213FX001	52	KRB5240X001