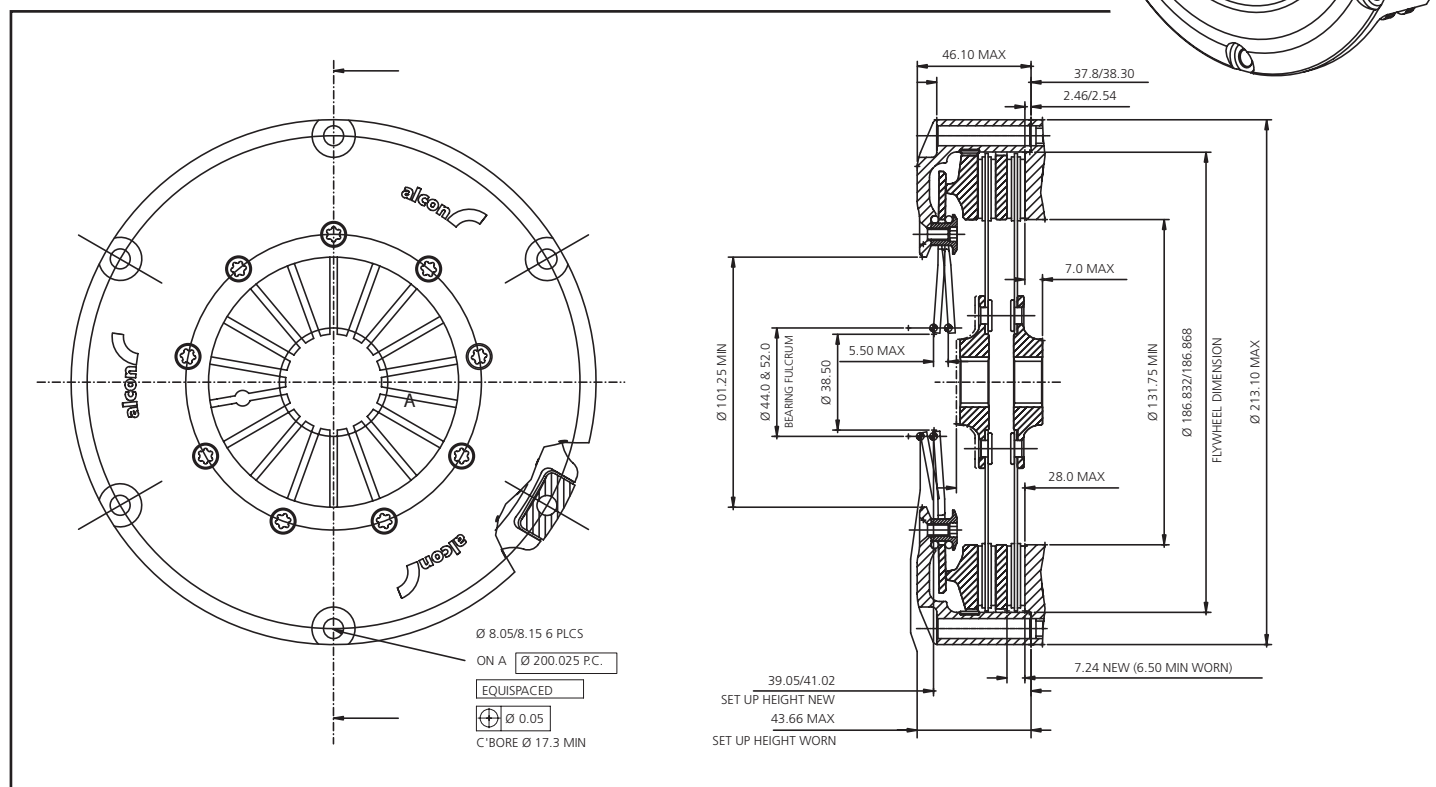
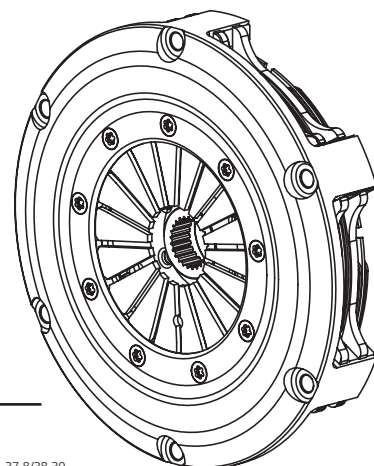


twin plate rally clutch assembly 184mm / 7.25"

KEY FEATURES AND BENEFITS

- **Compact design**
Low weight and moment of inertia
- **High stiffness cover design**
Improved startline control
- **Optimised fulcrum position**
Reduced pressure plate distortion
- **Open lug type design**
Improved cooling and dust removal
- **Interchangeability with other manufacturers' products**



PRODUCT REF	MAX TORQUE	SPRING RATE
KKR1842HTGSR01	817NM	Triple grey
KKR1842UTGSR01	990NM	Triple grey
KKR1842HDGSR01	786NM	Double grey
KKR1842UDGSR01	983NM	Double grey
KKR1842HSGSR01	707NM	Single grey
KKR1842USGSR01	872NM	Single grey
KKR1842HORSR01	522NM	Orange
KKR1842UORSR01	650NM	Orange

FLOATER PLATE
PRODUCT REF
KPS184L6F180

PRESSURE PLATE			
PRODUCT REF	RATIO	DIM H	D1
KPS184L6H511	High	13	157
KPS184L6U511	Ultra high	13	152

